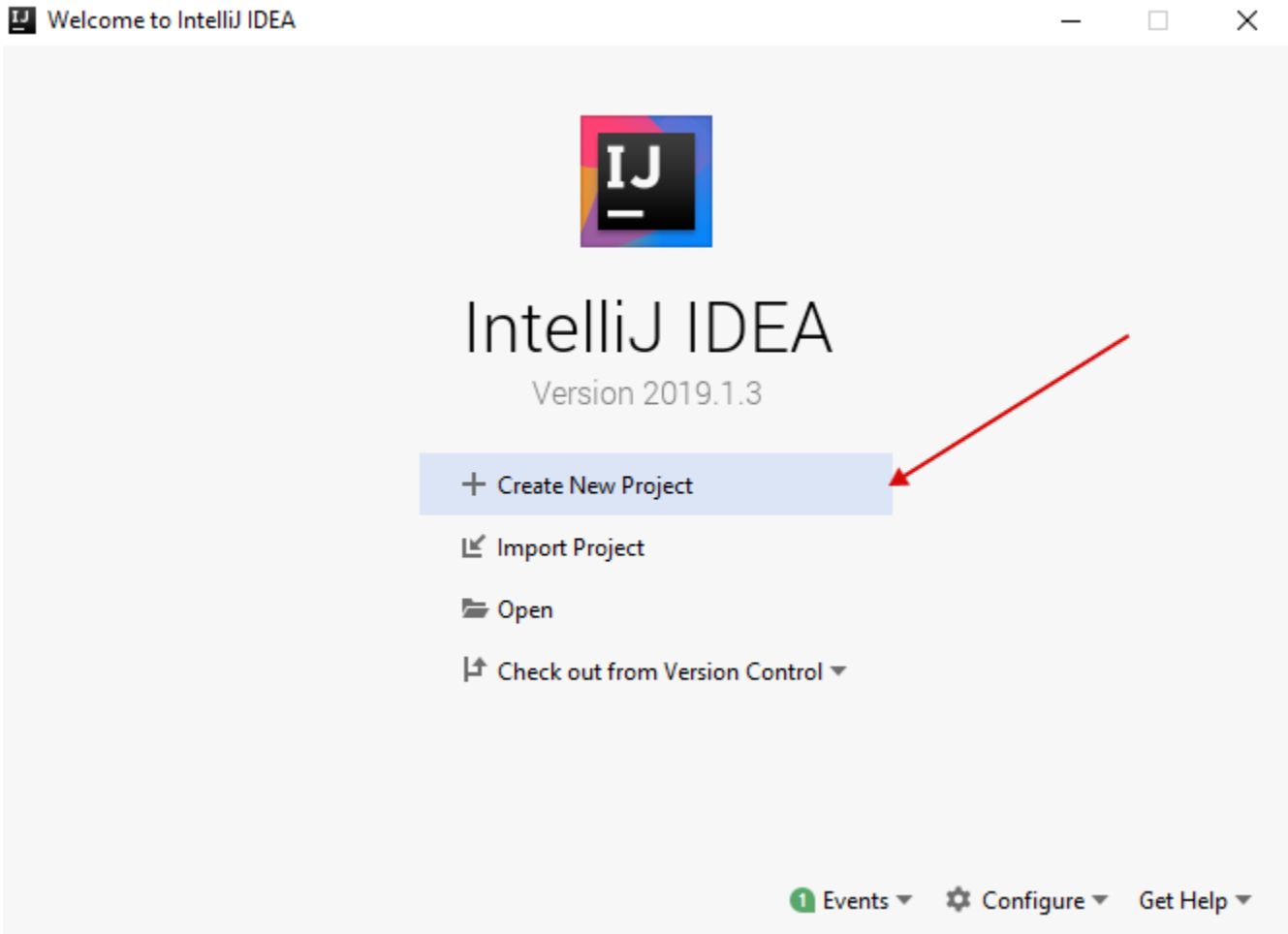


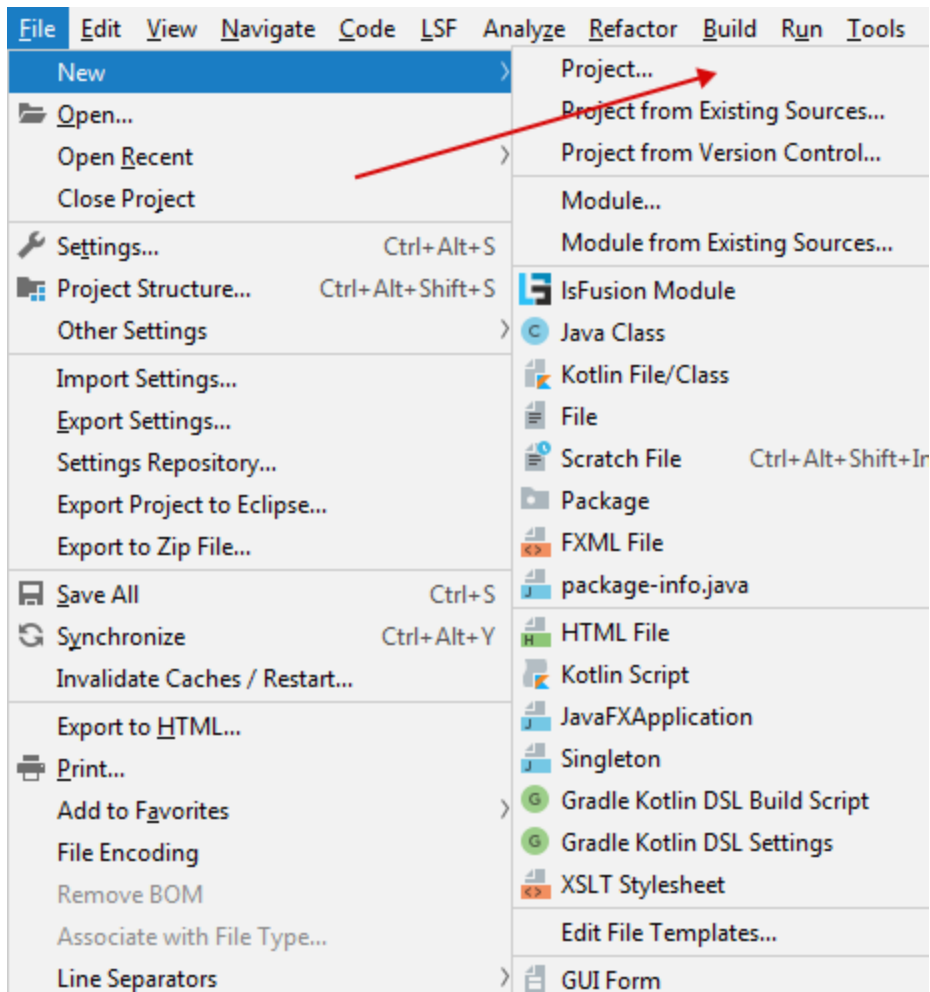
IDE

- IsFusion
-
-
-
- ()

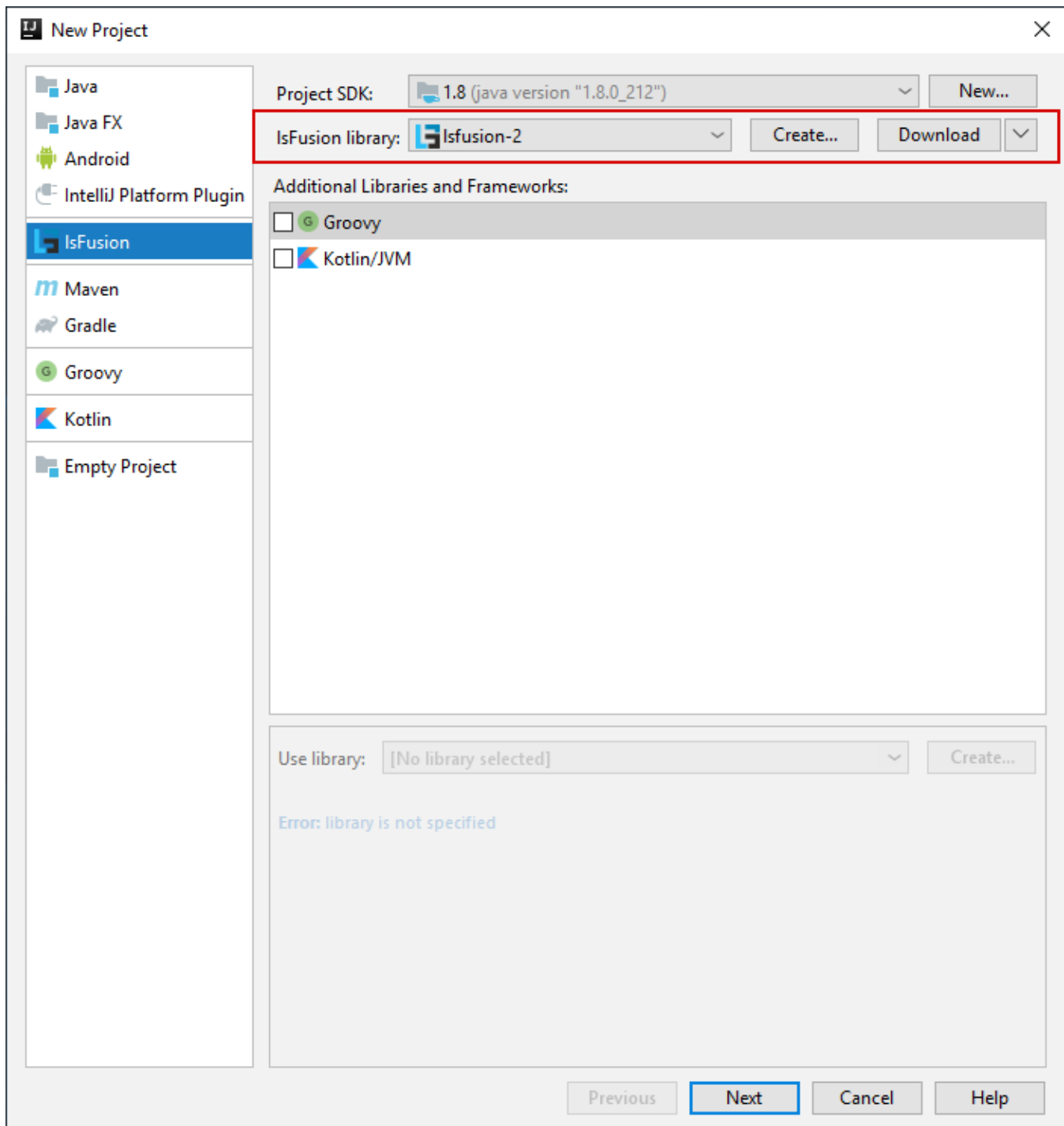
IsFusion

Create New Project IDEA., IDEA , File -> New -> Project.





IsFusion ., JDK IsFusion (, - Download Create), Next.



. . . Finish.

New Project [X]

Project name:

Project location: ...

Create conf/settings.properties file

Database settings:

Database host:

Database port:

Database name:

Database username:

Database password:

IsFusion server settings:

IsFusion server port:

Initial admin password:

▼ More Settings

Module name:

Content root: [Folder icon]

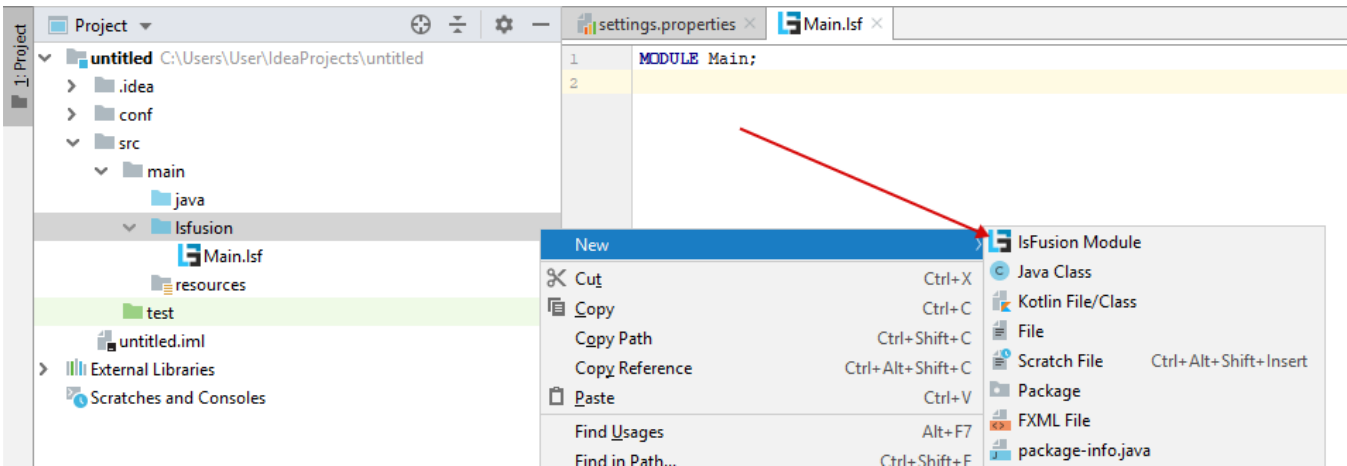
Module file location: [Folder icon]

Project format: [Dropdown arrow]


Previous **Finish** Cancel Help

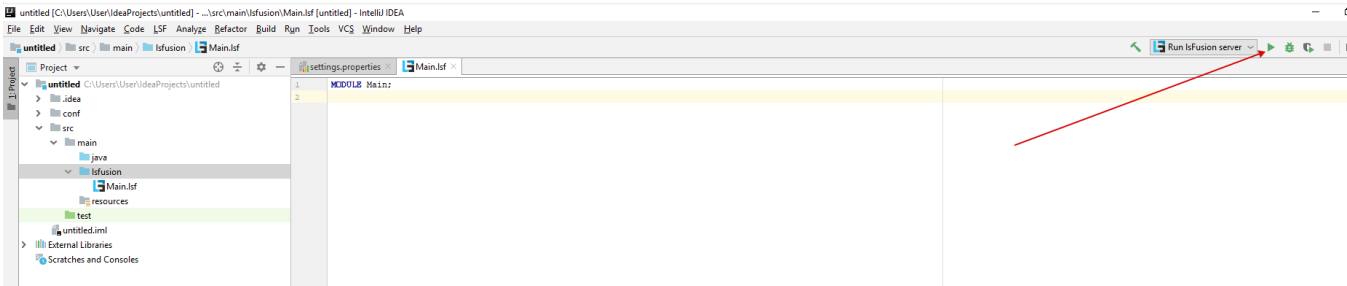
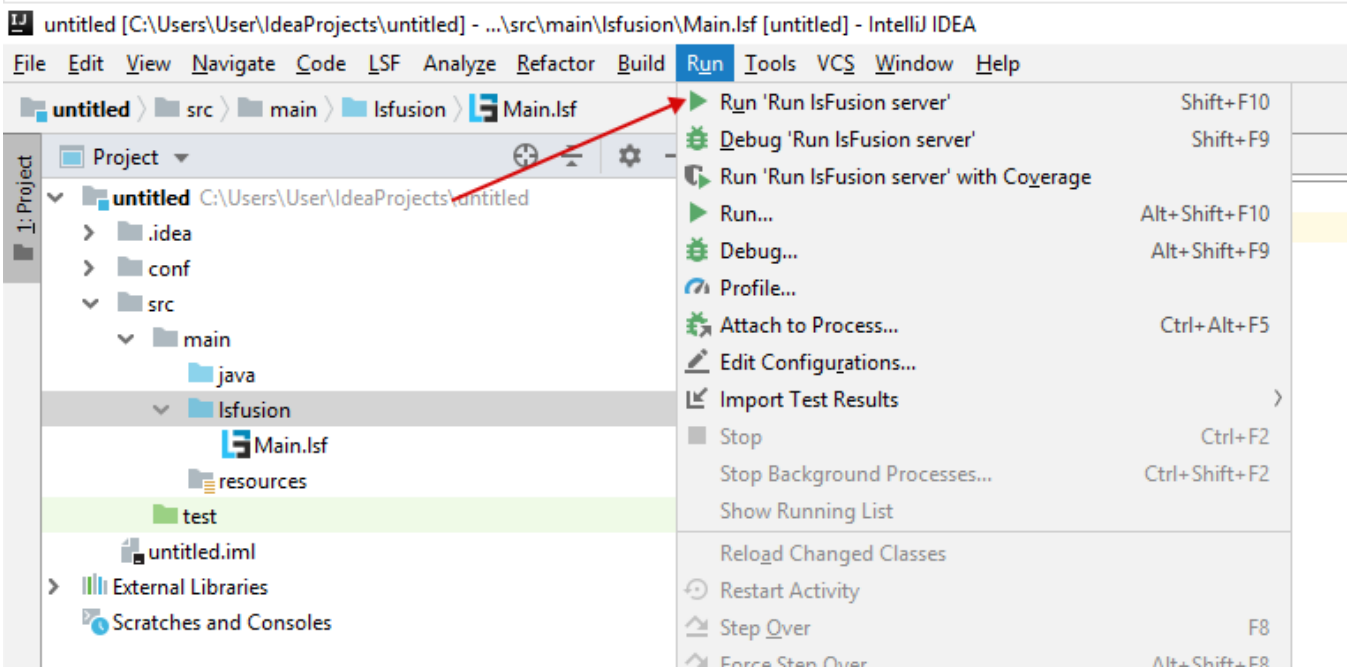
IsFusion, , src/main/lsfusion.

New! IsFusion.



, , (Package), .

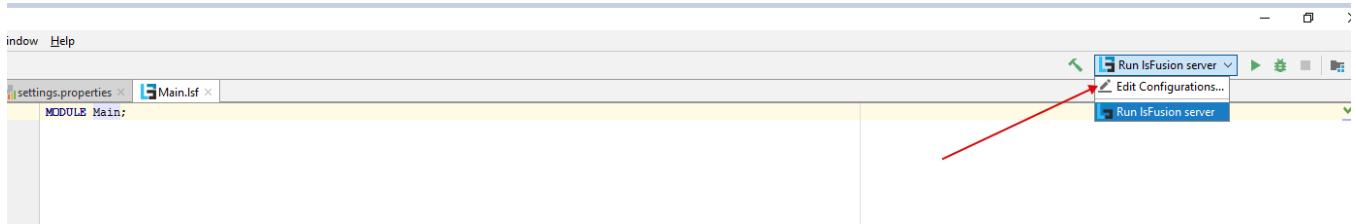
, . , Run -> Run 'Run IsFusion server',  Run IsFusion server . Server has successfully started.



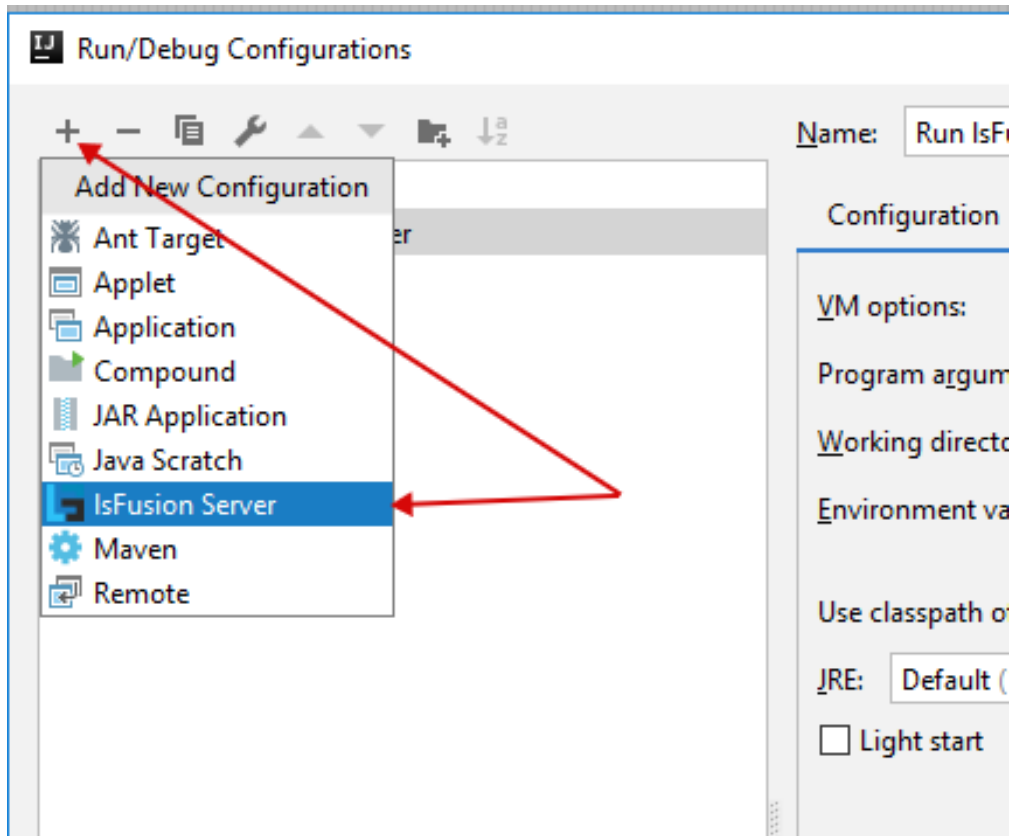
, , .

(Maven maven), . . :

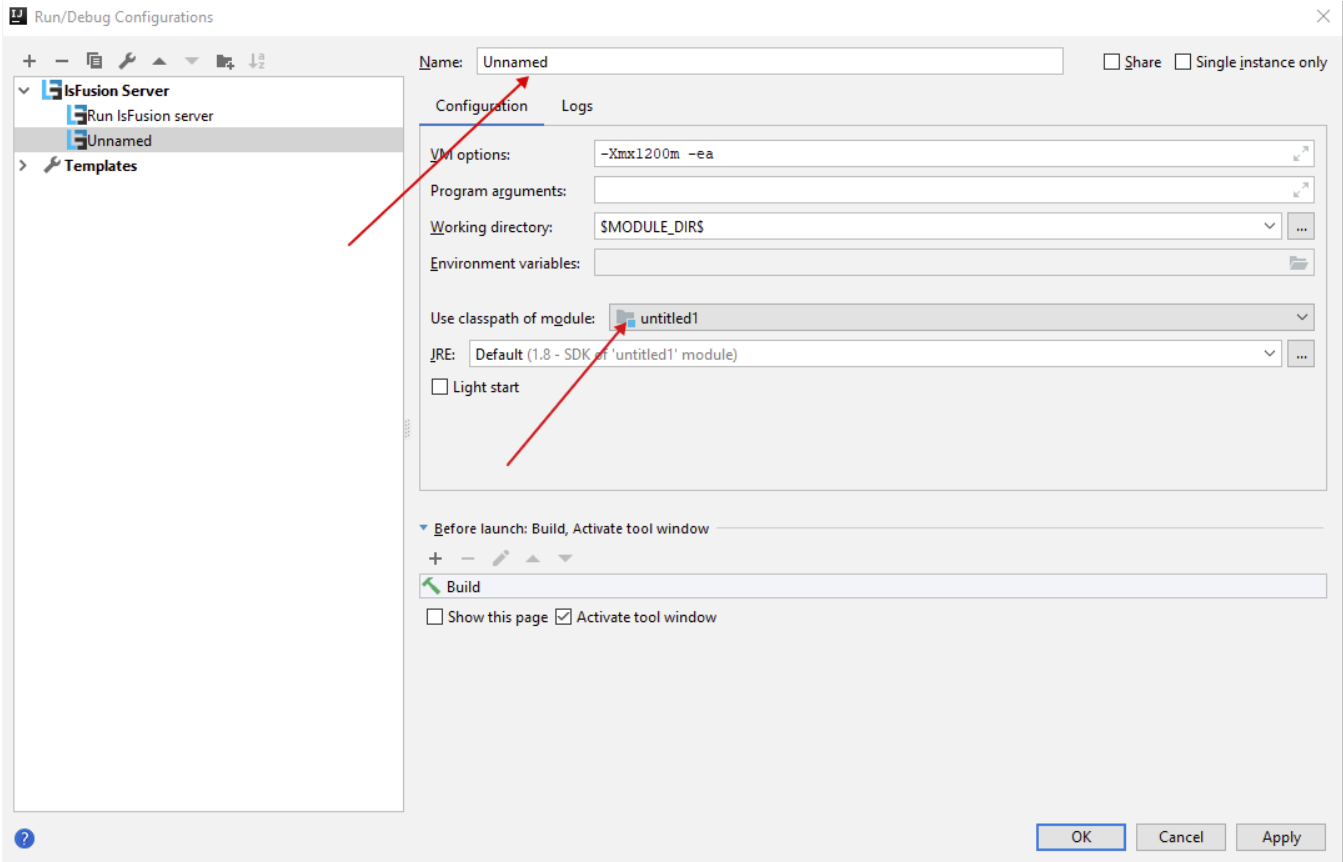
Edit configurations.



, + IsFusion Server



(), IsFusion. , , , , Java, ..



()

, jar-, , , . jar- (*artifact*) . jar-, :

- jar-
- ()